

K Education Centre

GCSE Maths - Foundation

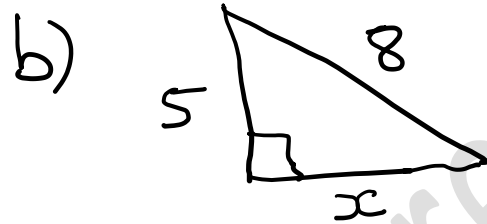
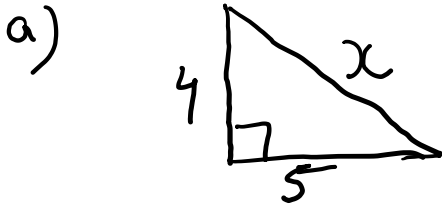
Pythagoras Theorem And Trigonometry -1

Assignment Questions

©KEducationCentre
Year 2023

Pythagoras Theorem And Trigonometry -1

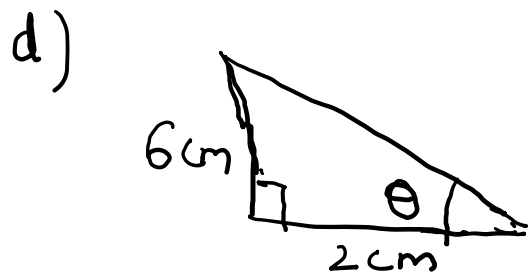
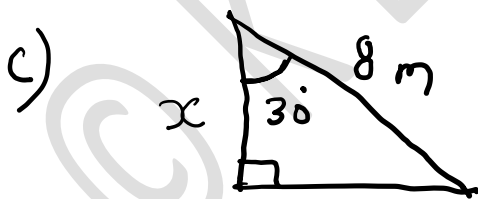
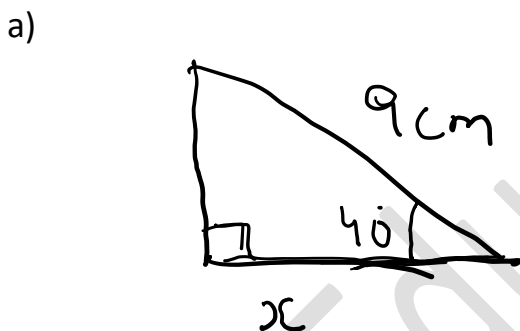
Q1: Find the missing values



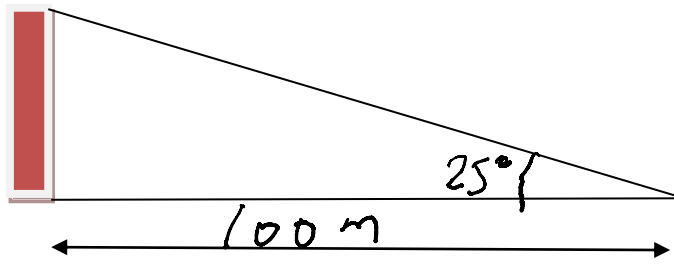
Q2: A person travels 60 km towards north, he then turns west and travels 40 km. How far away is the direct distance between the initial and final point.

Q3: A ladder 8 m long is placed against the wall. Calculate how high up the wall will ladder reach if the distance between the foot of ladder and wall is 4 m.

Q4: Find the missing values :



Q 5: Shyam paces out 100 m from the base of a tower. The angle to the top of tower is 25° . How much is the height of the tower ?



Q6: Calculate the angle that the diagonal makes with the long side of rectangle that measures 14 cm by 8 cm .

Q7 : A ladder of length 10 m , is placed so that it reaches 9 m up the wall. What angle does it make with the ground?