

K Education Centre

GCSE Maths - Higher

Linear Graphs

Assignment Questions

©KEducationCentre
Year 2022

Linear Graphs

Q1 : Find the gradient of line joining coordinates A (2 , 4) B (4 , 9)

Q2: Draw graphs for following lines :

a) $2x + y = 5$. for values of x from -1 to 3

b) $x + y = 4$

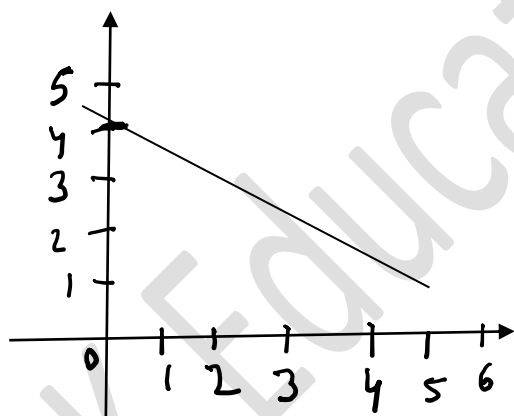
c) $y = 2x + 3$

Q3 : Find the equation of the line parallel to line $2y - x = 4$ and passing through the points (3,1)

Q4 : P has coordinates (4 , 4) and Q has coordinates (6 , 8) . Find the equation of the line which is perpendicular to the line PQ and passing through the midpoint of PQ.

Q5: Write down the equation of the line which is perpendicular to the line $2y - x = 4$ and passing through (2,1)

Q6 : Find the equation of this line



Q7 : Find the length of line PQ joining points P (4,4) and Q (9 , 8) , also find the mid points of line PQ.

Q8 : Solve the simultaneous equations graphically :

$$x + y = 8$$

$$y = 2x + 3$$