



KEC

K Education Centre



© K Education Centre

GCSE Physics – Particles

P4: Electric Circuits – Assignment 2

Assignment Questions

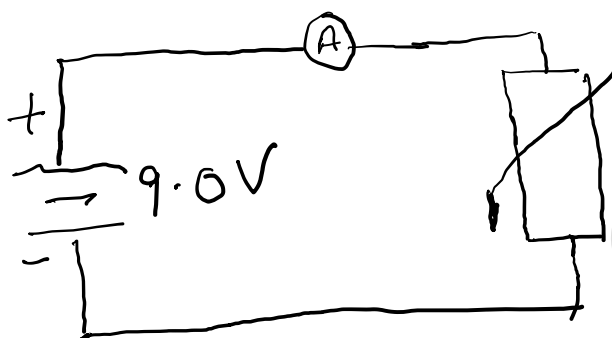
©KEducationCentre
Year 2022

P4 : Electric Circuits(Components Characteristics & Series Circuit)

Q: Draw the current potential difference graph for a diode.

Q : Define Ohms law. Give example.

Q : A thermistor is connected to a battery as shown in the diagram below.



- At 20°C the current through the ammeter is 0.8 A , and the potential difference across is 9.0 V . Calculate its resistance at this temperature.
- What will happen to the ammeter reading if the thermistor's temperature is increased?

Q: A 3.0 V cell is connected to a $4.0\ \Omega$ and $5.0\ \Omega$ resistor in series with each other.

- Draw the circuit diagram for this arrangement.
- The current through the resistors.

Q: Explain why adding more resistors in series increase the total resistance.