

K Education Centre

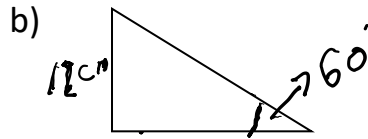
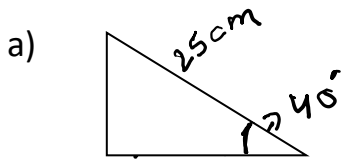
KS3 Year 9 Mathematics

Trigonometry

Assignment Questions

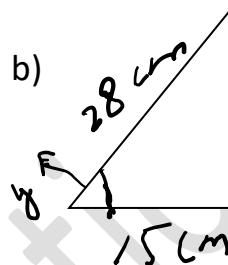
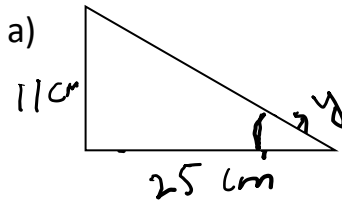
©KEducationCentre
Year 2022

Q1: Calculate the length of the all missing line segments.

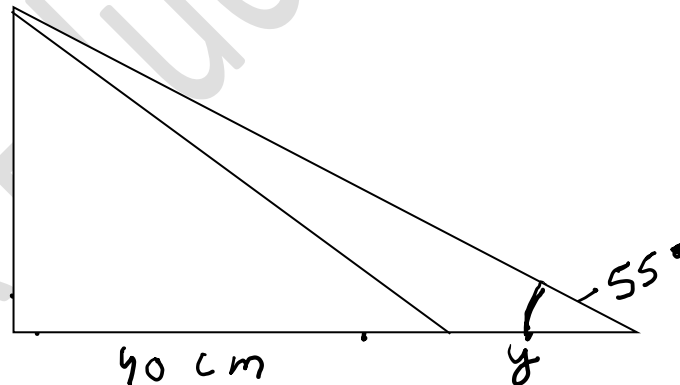


Q2: Tom stands 40 m from the base of a tower. He measures the angle of elevation from the ground level to the top of the tower as 60° . Calculate the height of the tower.

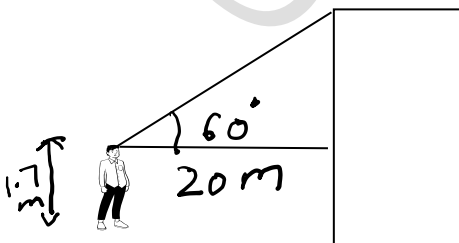
Q3 : Work out the size of angle y in each of these triangles.



Q4: Find the lengths of the sides marked y on the following triangle.



Q: A man who is 1.7 m tall stands on level ground from the building. As man looks up at the



top of the building the angle to horizontal is 60° as shown. Calculate height of the building.